



Invasive Plant Identification for Regional Mapping

Statewide Eyes Training for Eastern Maryland

Kerrie L. Kyde
Invasive Plant Ecologist
MD DNR Natural Heritage Program
kerrie.kyde@maryland.gov



Trees

- Tree of heaven
- Empress tree
- Callery pear

Ailanthus altissima

Paulownia tomentosa

Pyrus calleryana



Rhus typhina



Native lookalikes
staghorn and
shining sumac



Rhus copallinum



Tree of heaven

Ailanthus altissima





Empress tree

*Paulownia
tomentosa*

Empress tree

Paulownia tomentosa

Flowers



Leaves



Fruit



Northern catalpa

Catalpa speciosa



Bark



Callery pear

Pyrus calleryana



Shrubs

- Autumn olive *Elaeagnus umbellata*
- Privet species *Ligustrum spp.* **IPAC T2**
- Shrub honeysuckles *Lonicera spp.* **IPAC T1 (Amur)**
- Multiflora rose *Rosa multiflora*

Autumn olive

*Elaeagnus
umbellata*



© K.L. Kyde 2007

© K.L. Kyde 2006

© K.L. Kyde 2007

© K.L. Kyde 2005

© K.L. Kyde 2006

Privet



Ligustrum obtusifolium

Border privet

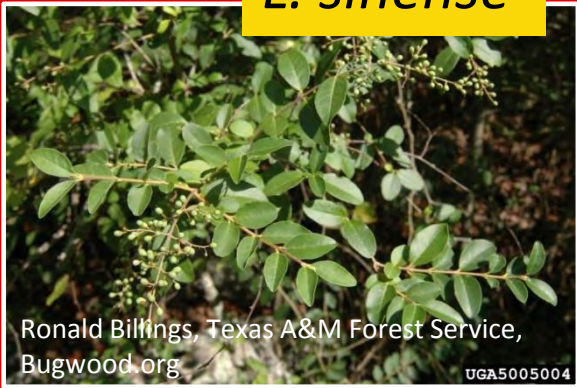
L. sinense Chinese privet

L. vulgare Common privet



© K.L. Kyde 2005

L. sinense



Ronald Billings, Texas A&M Forest Service,
Bugwood.org

UGA5005004

L. vulgare



Nava Tabal, IPANE, Bugwood.org

UGA5078032

L. obtusifolium

IPAC Tier 2



5453163

Leslie J. Mehrhoff, Univ of Conn., Bugwood.org



Chris Evans,
Univ of
Illinois,
bugwood.org



UGA2307079

James H. Miller, USDA Forest Service,

www. Forestryimages.org



Robert Vidéki, Doronicum Kft, Bugwood.org

5396203



Photo by Pancrat, Creative Commons



5453225

Shrub honeysuckle

Lonicera spp.



IPAC Tier 1
(proposed):
Amur honeysuckle



Multiflora rose

Rosa multiflora



Stipules

Vines

Herbaceous

- Japanese hop *Humulus japonicus*
- Mile-a-minute weed *Persicaria perfoliata*

Woody

- Porcelainberry *Ampelopsis brevipedunculata*
 - Oriental bittersweet *Celastrus orbiculatus*
 - English and Irish ivy *Hedera helix, H. hibernica*
 - Japanese honeysuckle *Lonicera japonica*
 - Kudzu *Pueraria montana var. lobata*
 - Wisteria species *Wisteria floribunda, sinensis, hybrid*
- IPAC Tier 2

Porcelainberry

Ampelopsis brevipedunculata



Oriental bittersweet

Celastrus orbiculatus



English and Irish ivy

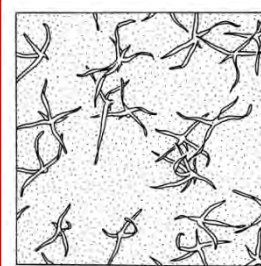
Hedera helix, *H. hibernica*



© K.L. Ryde 2011



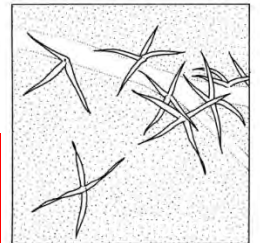
UGA9005075



H. helix

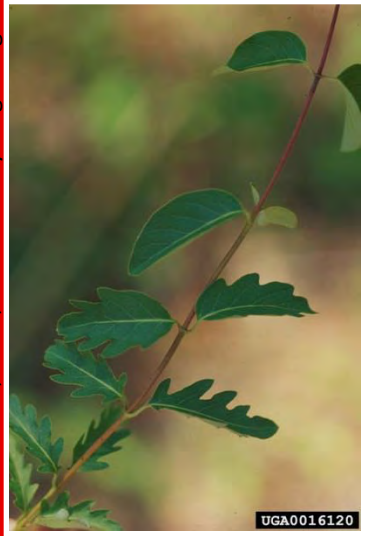
Drawings by
S. Bellanger

<http://alienplantsbelgium.be/content/hedera-hibernica>



Japanese honeysuckle

Lonicera japonica





© K.L. Kyde 2005



UGA0016127



UGA1162002



© K.L. Kyde 2005

James H. Miller, USDA Forest
Service, www.forestryimages.org

Kudzu



© K.L. Kyde 2005



UGA2307165

Pueraria montana var. lobata

Wisteria

Wisteria floribunda, *sinensis*, x *formosa*



IPAC Tier 2

Japanese hop

Humulus japonicus



Native lookalike
Virginia creeper

Mile-a-minute

Persicaria perfoliata



Native lookalike
Halberd-leaved tearthumb
Polygonum arifolium



[http://ag.udel.edu/e
mwc/research/biocon
trol/index.htm](http://ag.udel.edu/e
mwc/research/biocon
trol/index.htm)



Herbs & Grasses

- Garlic mustard
- Japanese knotweed
- Purple loosestrife
- Japanese stilt grass
- Golden bamboo
- Beefsteak plant
- Common reed

Alliaria petiolata

Fallopia japonica

Lythrum salicaria

Microstegium vimineum

Phyllostachys aurea

Perilla frutescens

Phragmites australis

Garlic mustard

Alliaria petiolata



© K.L. Kyde 2011



© K.L. Kyde 2006



Native violet



© K.L. Kyde 2006



5451846

Britt Slattery, US Fish and Wildlife, Bugwood.org



Leslie J. Mehrhoff,
University of CT,
Bugwood.org

Japanese knotweed

Fallopia japonica



Armin Jagel, Bochum
Botanical Club

Left to right: leaves of *F. sachalinensis*,
x bohemica and *japonica*

Purple loosestrife



Lythrum salicaria



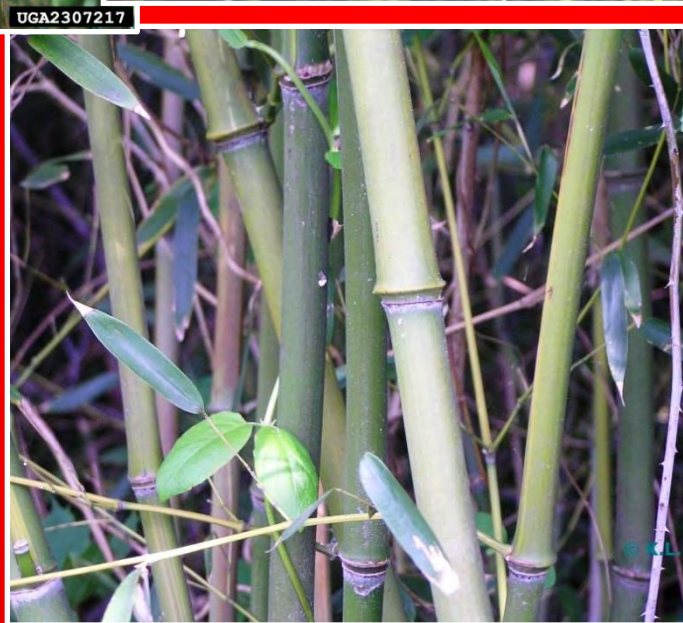
Japanese stilt grass



Microstegium vimineum

Bamboo

Phyllostachys spp



Beefsteak plant



Perilla frutescens

Common reed

Phragmites australis



Leslie J. Mehrhoff, University of Connecticut, Bugwood.org



Kevin Heffernan, VA DCR Heritage

Aquatics

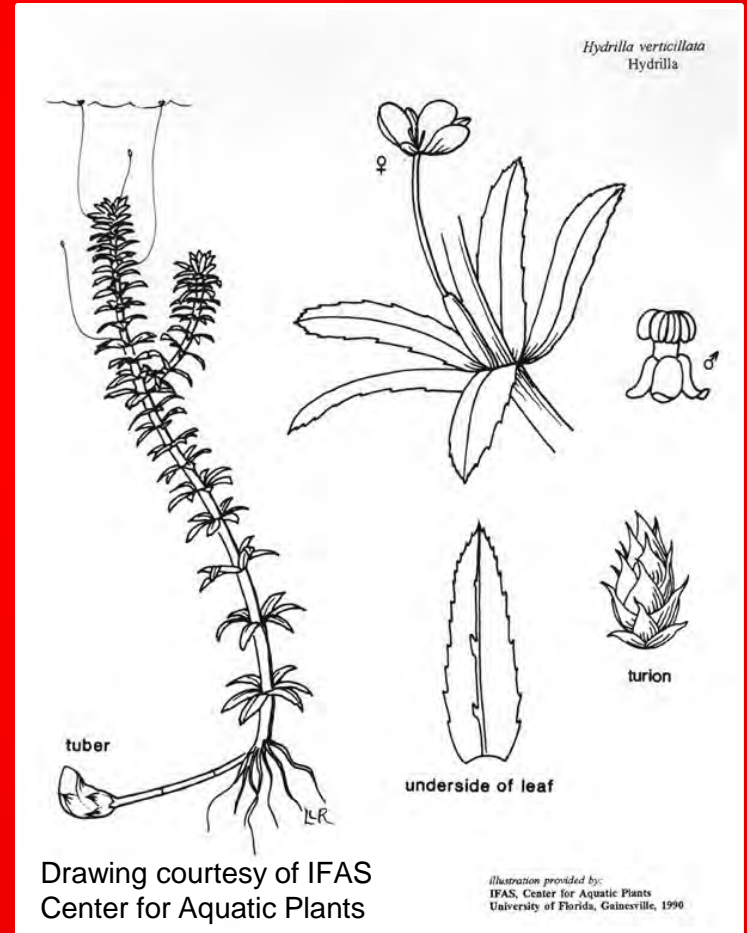
- Hydrilla *Hydrilla verticillata*
- Yellow flag iris *Iris pseudacorus* **IPAC Tier 1**
- Marsh dewflower *Murdannia keisak*
- Parrot-feather *Myriophyllum aquaticum*
- Eurasian watermilfoil *Myriophyllum spicatum*

Hydrilla

Hydrilla verticillata



Vic Ramey,
Univ of Florida



IPAC Tier 1



Nancy Loewenstein,
Auburn University,
Bugwood.org



UGA5272046

Leslie J. Mehrhoff, University of
Connecticut, Bugwood.org



Copyright © 2007 The Regents of the University of California. All rights reserved. 5387429

Joseph M. DiTomaso, University of California - Davis, Bugwood.org

Yellow flag

Iris pseudacorus

Marsh dewflower

Murdannia keisak

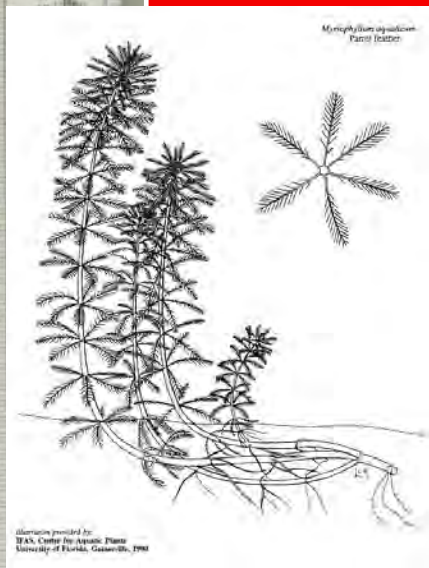


Native *Commelina virginica*
By Jim Stasz, hosted by
USDA-NRCS Plants
Database

Nancy Loewenstein,
Auburn University,
Bugwood.org

Myriophyllum aquaticum and *spicatum*

All other images from Maryland DNR



Drawing and image below courtesy of IFAS at <http://plants.ifas.ufl.edu/>



Parrot feather



Parrot feather
Myriophyllum aquaticum
Photo by Vic Ranney
Copyright 2001 Florida



Eurasian watermilfoil



THANK YOU!

Kerrie L. Kyde

Invasive Plant Ecologist

MD DNR Natural Heritage Program

kerrie.kyde@maryland.gov

301/948-8243